

CRED

CELL TOWERS: GETTING TO FMV WITH ASSET LISTINGS

TECHNICAL LIFE OF EQUIPMENT
DEPRECIATION WITH SALVAGE VALUES

1

Tower Structure
FAA Obstruction Warning Light(s)
Equipment Shelter, Foundation, Entry Panel, HVAC, GPS
Site Stone & Fabric
Fencing, Guard Wire, Underground Grounding Ring(s)
Site-work Clearing, Grubbing, Grading
Mobilization, Tower Erection, Transportation

WHY INVENTORY ASSETS of SITE TOWER SITES IN LIEU OF USE OR REPORTED COST

2

**RANDOM
SAMPLE TABLE
Handout**

Random Sample from Multiple States
RCN Lift Over Reported Taxpayer Cost

3

TOWER TYPES

Monopole
Self-Support
Guyed
Roof Mount
Stealth
Tree
Flagpole
Mast
Cross

4



Monopole

5

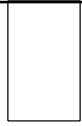


Self-SUPPORT

6



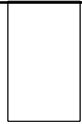
Guyed



7



**Guyed Tower
Compound**



8



ROOF MOUNT

9

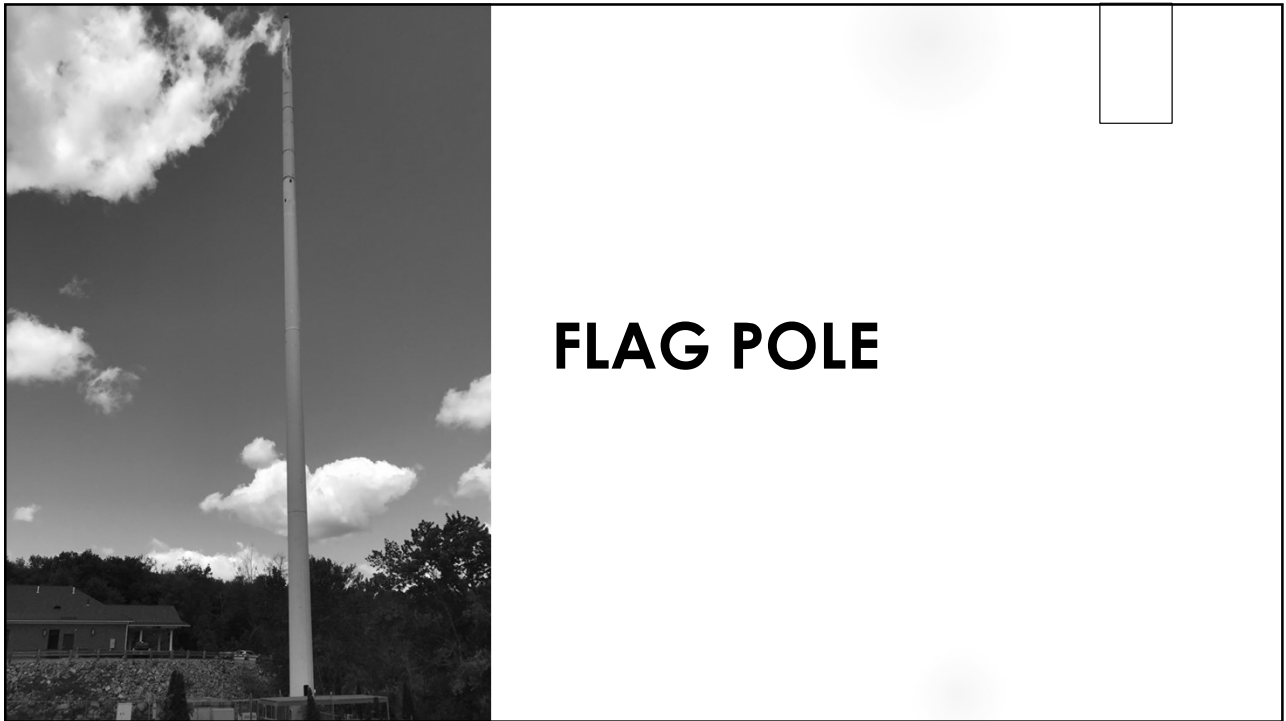


ROOF Mount

10



11



12



FLAG MAST or Cross

13

ANTENNA arrays

Tangible Personal Property of Wireless Service Providers

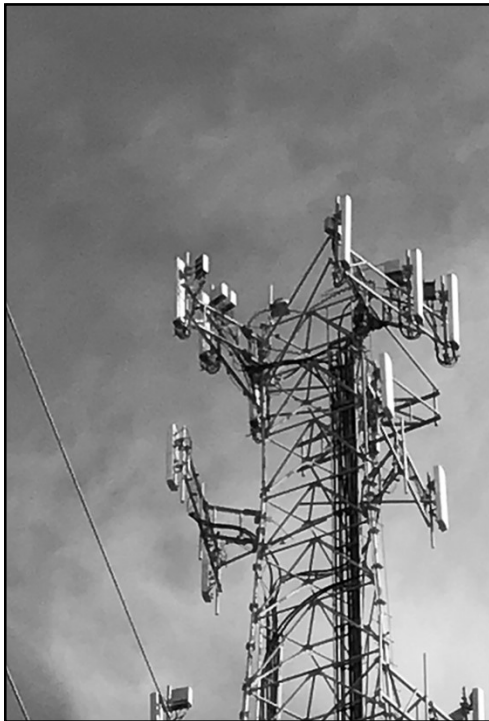
- Antennas – Sector Panel / Omni Dipole
- Antenna Mounts
- Co-Location Platform
- T-Arm
- Flush
- Amplifiers
- Coax Jumpers
- Universal BTS System Configuration

14



ANTENNA ARRAY

15



ANTENNA ARRAY

16



17

EQUIPMENT COMPOUND

Tangible Personal Property
Tower Owner

- Site Improvements
- Grounding System
- Tower Foundation
- Site Fencing
- Site Stone & Fabric
- Site Landscaping
- Tower Obstruction Lighting
- Electric Meter Base

18



19



20



21



22



23



24

Asset Listing Comparison HANDOUT

Personal Property Account Summary

Vs

CRED Carrier Material List

25

	Unit	Qty	Unit Cost	Cost
7 Monopole Direct Embedded	LnFt	0	-	-
8 Aggrate Backfill	Ton	0	-	-
9 Monopole Base Plate	LnFt	0	-	-
0 Concrete Foundation / Cassion	Each	0	-	-
1 Monopole Stealth	LnFt	0	-	-
2 Trees	LnFt	0	-	-
3 Flagpole / Mast	LnFt	0	-	-
4 Water Tank	Each	0	-	-
5 Concrete Foundation / Cassion	Each	0	-	-
6 Self Support	LnFt	0	-	-
7 Mat / Pier & Pad / Drilled Pier Foundation	Each	0	-	-
8 Guyed	LnFt	0	-	-
9 Concrete Foundation / Cassion	Each	0	-	-
10 Anchor Fencing - 4' High	LnFt	0	-	-
11 Anchor Fencing - 6' High	LnFt	0	-	-
12 Anchor Fencing - 7' High	LnFt	0	-	-

Tower Asset Listing

26

The screenshot shows an Excel spreadsheet with the following data:

Area	SF	0	0	0
Equipment & Improvements				
*Strip Top Soil 4"	CuYd	0.00	-	-
*Cut / Fill - Medium 2"	CuYd	0.00	-	-
Base 6" Crushed Stone	Ton	0.00	-	-
Fencing				
Chain Link - 6' High	LnFt	0	-	-
Chain Link - 7' High	LnFt	0	-	-
Chain Link - 8' High	LnFt	0	-	-
Chain Link - 10' High	LnFt	0	-	-
Double Gate - 6' High	Each	0	-	-
Double Gate - 7' High	Each	0	-	-
Double Gate - 8' High	Each	0	-	-
Double Gate - 10' High	Each	0	-	-
End Post - 6'	Each	0	-	-
End Post - 7'	Each	0	-	-
End Post - 8'	Each	0	-	-

Equipment compound Asset Listing

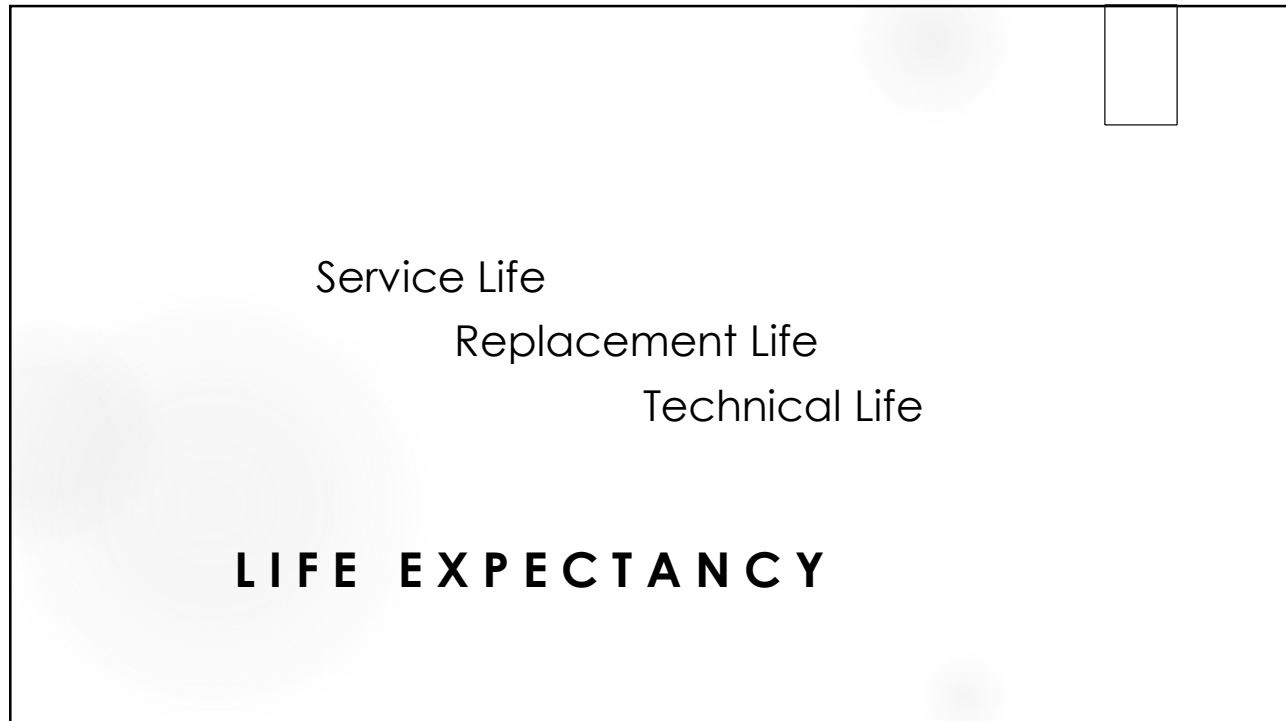
27

The screenshot shows an Excel spreadsheet with the following data:

Equipment	Unit	Qty	Cost	Cost
Coax Jumper, 12' SCF12-500	Each	0	-	-
Antennas	Each	0	-	-
Antenna Mount(s)	-	-	-	-
T Frame	-	-	-	-
V Frame	Each	0	-	-
Low Profile Co-Location Platform	Each	0	-	-
Monopole Triple T Arm	Each	0	-	-
Monopole Compact	Each	0	-	-
Monopole Flush Ring Mounts	Each	0	-	-
XLD Non-Penetrating Roof Top Frame	Each	0	-	-
XLD Rooftop Flushmount Overhang	Each	0	-	-
Roof Top Parapet Overhang	Each	0	-	-
Non-Penetrating Tripod	Each	0	-	-
Handrail Antenna Pipe	Each	0	-	-
RRU	Each	0	-	-
RRU Power Source & Rectifier	Each	0	-	-
Microcell Drum	Each	0	-	-

Wireless service Provider Asset Listing

28



29

WIKIPEDIA

Service life Vs. Technical Life

A product's service life is its period of use in service. It has been defined as "a product's total life in use from the point of sale to the point of discard", and distinguished from replacement life, "the period after which the initial purchaser returns to the shop for a replacement."

Service life represents a commitment made by the item's manufacturer and is usually specified as a median. It is also the time that any manufactured item can be expected to be 'serviceable' or supported by its manufacturer.

Service life is not to be confused with shelf life, which deals with storage time, or "technical life", which is the maximum period during which any item can physically function. Service life also differs from predicted life, or MTTFMTBF (Mean Time to Failure/Mean Time Between Failures),

30

Experience has shown Assessors embrace Asset Listings and findings of Replacement Cost New ... but the questions still loom regarding Depreciation, Asset Listings and Salvage Value

What about Service "Useful" Life of telecom equipment ... our State depreciation tables value equipment below 10% in 7-Years

We're bound by State depreciation Groupings ... yet we know there is equipment that has a Useful Life in excess of 13-Years

What is a Salvage Value for used towers and wireless equipment

ADVANCING RCN TO RCNLD

31



15-Years

20-Years

25-Years

40-Years

Or, Greater


What is the Technical Life of "Cold Steel"

32

Service Life Chart for
Hot-Dip Galvanized Coatings

**American
Galvanizers
Association
Handout**

33



Panel Antenna 6' / 8' – Single/ Double	15-Years
Copper Clad Ground Rod Electrodes	40-Years
Galvanized Steel Tower Accessories	65-Years
Telecom Shelters	50-Years
Back-up Generator	30-Years
Modular DC to AC Power Inverter	27-Years
Optical Fiber Cable	25-Years
FAA Obstruction Light	15-Years

**Technical Life of Other
Cell Tower Site
Components**

34

Cell Tower / Carrier Equipment			
Service Life (SL) & Uniform Code Index (UCI)			2/25/2018
Description	SL	Average SL	UCI
Galvanized Cold Steel - Tower Type		65	
Self-Supporting	65		2790.101
Guyed - 24" - 3 Leg / Anchor	65		2790.122
Monopole	65		2790.200
Back Haul Drums		20	2792.001
CATV / Telecommunication Satellite Dish		35	
Wire Mesh	35		2792.003
Fiberglass	35		2792.004
Telecommunication Equipment Shed(s)		47	
Wood Frame Site Built	39		2795.002
Veraflex Aggregate	50		2795.003
Fiberbond	50		2795.004
Aluminum	50		2796.004
Telecommunication Equipment Cabinet(s)		25	
Transmission Steel Cabinet	25		2796.002
Transmission Aluminum Cabinet	25		
Battery Storage Cabinet	25		
Galvanized Cold Steel - Ice Bridge		65	
Galvanized Cold Steel - Antenna Mounts		65	
Antenna 4' / 6' Single / Double		8	
Remote Radio Unit (RRU)		13	
GPS Transmitter / Receiver		10	
Compound Leasehold Site Improvements		48	
Grading and Rock Barrier	39		2120.000
Crushed Stone	39		2500.000
Galvanized Fencing with Guard Wire	65		2830.002
Power		18	
Back-up Generator	25		16210.30
VRLA 48V 240Ah Battery	10		
Commercial Wall Mounted HVAC		15	
Grounding Components		48	
Ground Rod Electrodes - Copper Clad	40		
# 2 Solid Copper Wire	40		
Ground Rod Connector - Galvanized	65		

35

CRED Depreciation Worksheet Categories		
Average Technical Life (ATL)		
Tower	Tower Accessories	Antenna
Antenna Structure	Ice Bridge	Panel Antenna
Concrete Pier	Antenna Mount	Microwave Drum
Ground Rod	Pre-designed Raised Platform	Equipment Shelter / Cabinet
Bare Copper	Trapeze	Concrete Foundation
GPS Antenna	Bare Copper	AC / DC Power Inverter
FAA Obstruction Lights	Ground Rod	Remote Radio Unit
Anchor	<i>48 Year ATL</i>	200A 1P Power Disconnect
Guy		Bare Copper
<i>46 Year ATL</i>	Leasehold / Compound Improvements	<i>34 Year ATL</i>
	Fencing	
Power Equipment	Power Meter Base	Transmission Equipment
Generator	Landscape Mat	PWR Rectifier 24V
Transfer Switch	Gravel	Surge Arrestor
Diesel Fuel Cell	Bare Copper	GPS Antenna
Battery Cabinet / Rack	Ground Rod	EVDO BTS Units
Back-up Batteries 12V 180A	<i>50 Year ATL</i>	Universal Radio Controller
24V Power Inverter		Ground Buss Bar
Automatic Power Controller	Analog / Digital Switch	Bare Copper
Foundation	Multi-port Ethernet Card	1 5/8" COAX Cable
Bare Copper	Dark Fiber	Fiber
Ground Rod	BBU Equipment Cabinet	24V DC Power Converter
<i>35 Year ATL</i>	Control Switch Module	<i>22 Year ATL</i>
	Automatic Power Controller	
	<i>28 Year ATL</i>	

36

\$

	List Price	Used Price
▶ 150' Self-Support Tower	\$64,700	\$10,800
▶ 65' Pine Tree Monopole	\$75,000	\$ 9,950
▶ FAA Obstruction Light	\$ 8,750	\$ 3,995
▶ 190 AH North Star Battery	\$ 749	\$ 359
▶ 2 Bay Equipment Cabinet	\$11,780	\$ 2,995
▶ Aggregate Equipment Shelter	\$67,800	\$12,950
▶		

Sampling of Cost of Used Salvage Equipment
28% to Varies 48% of list price

37

SALVAGE VALUE REFERNCE SOURCES

TOWER DIRECT SALES
www.towersdirect

WIRELESS CLASSIFIED
www.wirelessclassified

▶

Secondary Market – Used And Surplus Equipment Pricing

38



- Develop current Asset Listing(s)
- Photograph assets in place and on-site
- Require taxpayers to Unbundle their equipment by site
- Obtain In-Service equipment dates from taxpayers
- Consider Technical Life for equipment groupings
- Revise composite residual cost with salvage values

Confidently ... allow site photos, asset listings, current pricing and a Summary Analysis fulfill your role in the presentation of the Preponderance of Evidence in supporting a current FMV of Cell Tower Site equipment

In Summary

39

... Perhaps Its Time
To Challenge ...
UNDERVALUATION

DUE DILIGENCE VIA RCN ESTIMATES, DEPRECIATED AND FACTORED WITH INCOME AND SALES APPROACH IS COMPREHENSIVE, UNIFORM, FAIR & EQUITABLE TO AVOID LOSS REVENUE IN TELECOMMUNICATIONS.

40